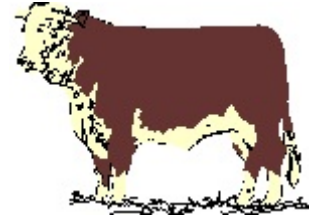


# OPEN HEREFORD AND SIMMENTAL BEEF SHOW

SUNDAY, SEPTEMBER 5<sup>th</sup> 1:00 p.m.



## DIRECTORS

Larry Barkley 537-2441,

Tom & Rose VanPutten 346-5777 fax 346-1624

### General Rules

1. Proof of Liability Insurance must accompany each entry form for the animals being shown.
2. Entries close on August 27, of the current year.
3. All prize money will be paid by cheque, as soon as possible.
4. All cheques must be cashed before December 1 of current fair year.
5. Entry fee will be 20%+HST of winnings, and a \$5.00 membership fee.
6. Late entry fee is an additional 5% of prize money awarded.
7. Late entries will be accepted until 11:00 a.m. the day of the showing.
8. Cattle must not be removed before 4 p.m. the day of the show.
9. Each cattle exhibitor to receive one pass for each additional 4 animals more than four head upon receipt of entry form.

### **Special NOTES:**

1. Breeds will be alternated in the beef ring.
2. Each breed must have at least 3 exhibitors per breed. If these qualifications are not met, only half of the prize money will be awarded.
3. All purebred registered animals, whether owned by one person or by more than one person are considered to be the production of the farm or breeding unit.
4. Each breeding unit is allowed a maximum of 10 exhibits excluding the Breeder's Herd and Get-of-Sire classes. All exhibits must be owned by and registered in the name of the exhibitor.
5. All animals being shown in single classes must be registered at the time of the entries' closing. All animals must be legibly tattooed.
6. Random inspection of tattoos will be done. Breeders Herd and Get-of-Sire - animals and papers will be checked before entering the ring.
7. Class 4, 8, 11, 14, 15 & 16 Banners only, no prize money.
8. The Canadian Hereford and the Ontario Hereford Associations have banned aerosols. This will also apply to the Simmental Show

### Class

1. MALE - calf born on or after January 1, 2010, minimum 3 months of age on show day.
2. MALE - Yearling born January 1, 2009 to December 31, 2009
3. MALE - born January 1, 2008 to December 31, 2008
4. SPECIAL - Grand and Reserve Grand Champion Male

5. FEMALE - Calf born on or after January 1, 2010, minimum 3 months of age on show day.
6. FEMALE - Heifer born March 1, 2009 to December 31, 2009 (Junior)
7. FEMALE - Heifer born January 1, 2009 to February 28, 2009 (Senior)
8. SPECIAL - Grand and Reserve Grand Champion Junior Female
9. FEMALE - born January 1, 2008 to December 31, 2008 with her own 2010, natural purebred registered calf at foot.
10. FEMALE - born prior to January 1, 2008, with her own 2010 natural purebred registered calf at foot. Calf can only be shown with mother and in Class 9 & 10.
11. SPECIAL - Grand and Reserve Grand Champion Senior Female
12. BREEDER'S HERD - A group of four (4) animals bred by the exhibitor, both sexes represented, must be exhibited in previous classes. At least one animal must be owned by the exhibitor. Limited to one exhibit per exhibitor.
13. Get-of-Sire - 3 animals from the same sire, both sexes represented, at least one owned by the exhibitor, limited to one exhibit per exhibitor. Will need papers for this class.
14. Grand Champion & Reserve Grand Champion Female.
15. Premier Breeder.
16. Premier Exhibitor.

**SPECIAL** - New exhibitor with the Most points donated by Summer Heights, Cornwall  
 - Exhibitor with Most points donated by Emerald Links, Greely

### **Ottawa Valley Hereford Junior Showmanship Competition**

No Entry Fee. Each participant will receive \$5.00 as a reward. There will be a Zone 5 Junior Hereford Year End Award for the person with highest points, as well as an award for the person who participated in the most fairs, within the Zone. Ages of participant as of January 1<sup>st</sup> of the current year.

#### **Class**

1. Pee Wee - ages 3-7
2. Junior - ages 8-13
3. Intermediate - 14-17
4. Senior - 18-21

